

KNX Gateway

Technical and service support must come from Intesis directly.
 LG Electronics Inc. warrants and assumes no liability for this product.
 - This is the landing page of INTESIS MAPS: <https://www.intesis.com/products/intesis-maps-home>.

INKNXLGE0160036 (Indoor Unit ~16) / INKNXLGE0640036 (Indoor Unit ~64)

Specially designed to allow monitoring and bidirectional control of all the parameters and functionality of LG air conditioners from KNX protocol.



Key features

- 2 model types
- Up to 64 connectable indoor units
- Direct connection to KNX TP1 bus
- Independent management of communications
- Power supply : 9 to 36V DC or 24V AC (not included)
- KNX Power consumption : 5mA
- Standard DIN-Rail 6 modules enclosure
- LG Slave Central controller (for example, AC Smart) and PDI can be operated with KNX gateway

Key benefits

- Easy & quick installation : user comfort
- Flexible integration (Intesis MAPS & KNX) Export Group Address by "csv" file to ETS5/6
- Compatibility with all LG products (Air-Conditioning, ERV, Hydrokits and AWHHP)
- Ergonomic & friendly user interface (using the supplied software Intesis MAPS)
- One single tool for settings, commissioning, SW update and troubleshooting

Key messages

- Manage your building with an advanced building automation solution
- Energy savings
- Power consumption measurement using additional LG PDI device
- Bidirectional communication between LG & KNX
- Your system diagnostics accessible through LG Error codes

MODEL NAME	MAX. CONNECTION INDOOR UNITS
INKNXLGE0160036	16
INKNXLGE0640036	64

Intesis MAPS is Configuration Software for Intesis KNX Gateway Series

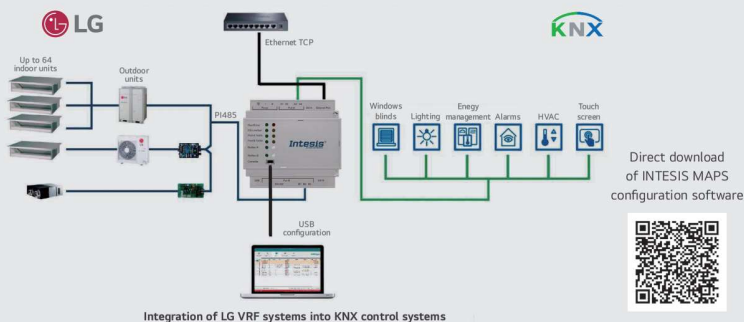
Easy to use tool for the configuration of Intesis gateway, in a fast and effective way.
 It offers the maximum integration possibilities with a minimal knowledge required on the system to be integrated.



Intesis MAPS
Configuration software

- Only needed during configuration.
- One single tool for the configuration of the whole range of Intesis KNX gateway series.
- Supplied with Intesis gateway with no additional cost.
- Configuration examples for all systems that can be integrated.
- Mapping table editable using excel, allowing a simple and fast association of KNX Group Addresses, exported from ETS, to Intesis gateway's datapoints.
- Includes powerful and useful features for configuration, setup and troubleshooting.

Installation Scene



Integration of LG VRF systems into KNX control systems

INKNXLGE001R000 (For Indoor Unit)

LG-KNX gateway allows fully bi-directional communication between LG VRF systems and KNX installations.

One gateway, one AC unit : This is the solution of **ONE-TO-ONE** integration. All required KNX DPT objects are fully compatible with all KNX thermostats in the market. The gateway is wired directly to an indoor unit. This allows not only the control of the main AC functions such as operating mode, fan speed, temperature setpoint, but also the monitoring of errors and alarms.



Key features

- KNX certified.
- Configured by ETS standard configuration tool.
- KNX database available on ETS5 / 6
- Reduced dimensions allowing a quick installation inside the Air Conditioner unit.
- All the required DPT objects are 100% compatible with all KNX thermostats in the market.
- Energy efficiency functions, such as "timeout", "open window" or "occupancy".
- Smooth integration of KNX thermostats allowing the control of the AC unit by the thermostat's own temperature sensor (Virtual Temperature)
- Simultaneous control of the AC unit by LG remote controller and KNX.

Key benefits

- Optimization cost for small or medium installations.
- Decentralized device control : one gateway connected to each indoor unit.
- Easy integration on KNX installations
- Intuitive configuration

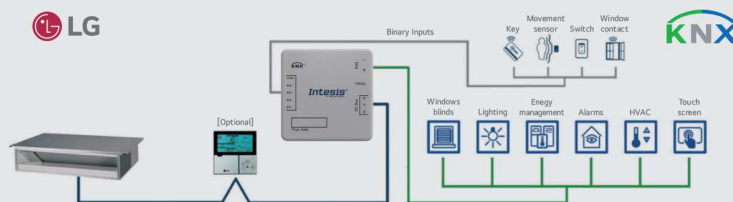
Key messages

- Total control and monitoring of the AC unit from KNX, including AC unit's internal variables, running hours counter (for filter maintenance control) and error indication (CH Error Codes).
- Fully integrated solution on Engineering Tool Software ETS5 / 6 by database product

KNX LG solution concept

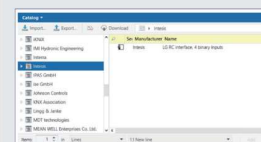


Installation Scene & LG Topology

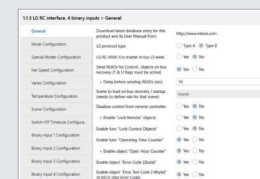


KNX Product

Database available directly on ETS5/6 under INTESIS manufacturer



Configuration by ETS Data Base



Web landing page of the product

